

Wilson School Solar Project

Kane County, Illinois

ALTA/NSPS LAND TITLE SURVEY

GENERAL DRAWINGS

DWG NO.	TITLE
SHEET 1	COVER SHEET
SHEET 2	GENERAL NOTES AND LEGAL
SHEET 3	DETAIL SHEETS (NON-CONTOUR)
SHEET 4	DETAIL SHEETS (CONTOUR)

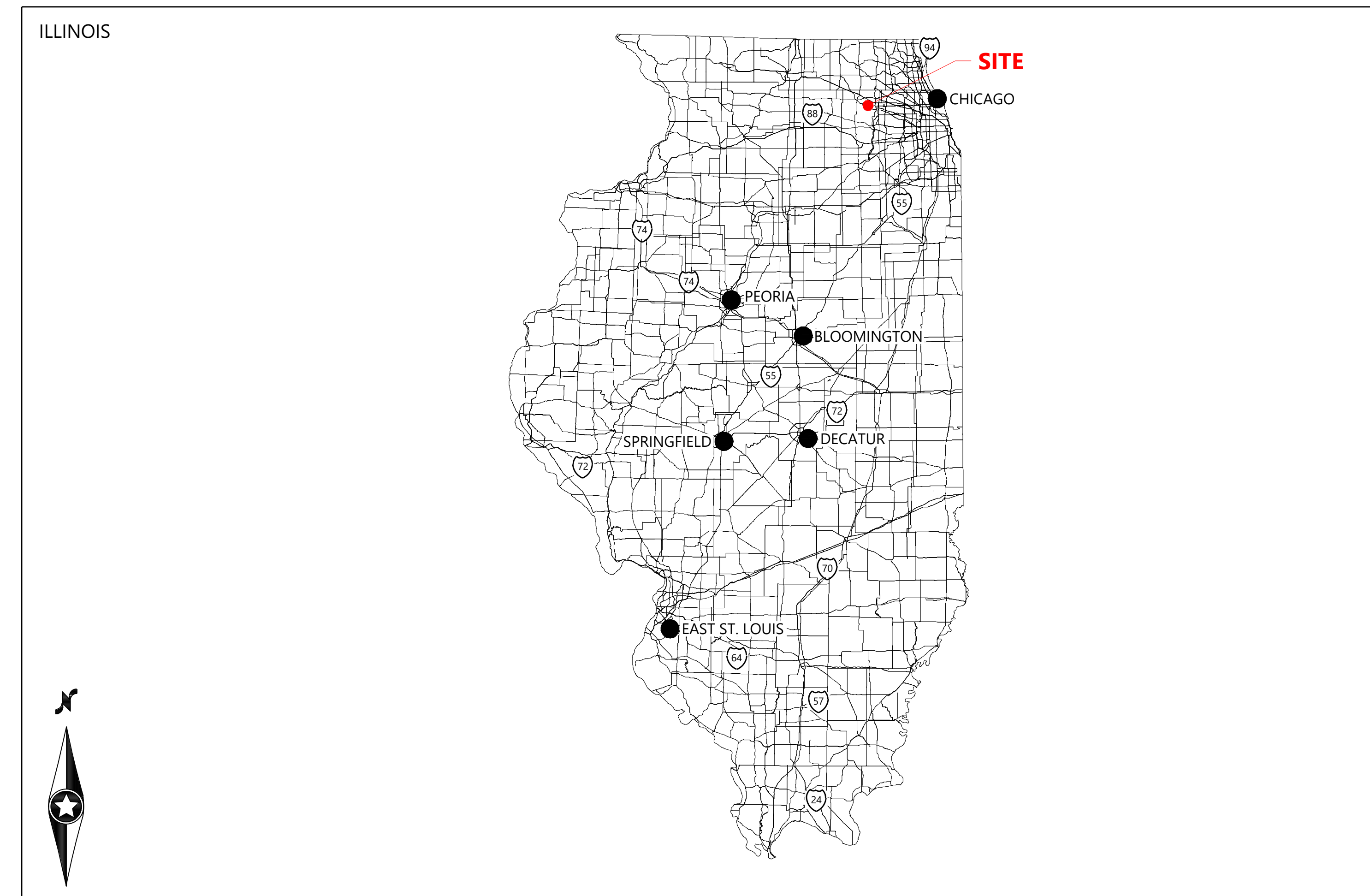
PREPARED FOR:



REVISIONS:
DATE COMMENT

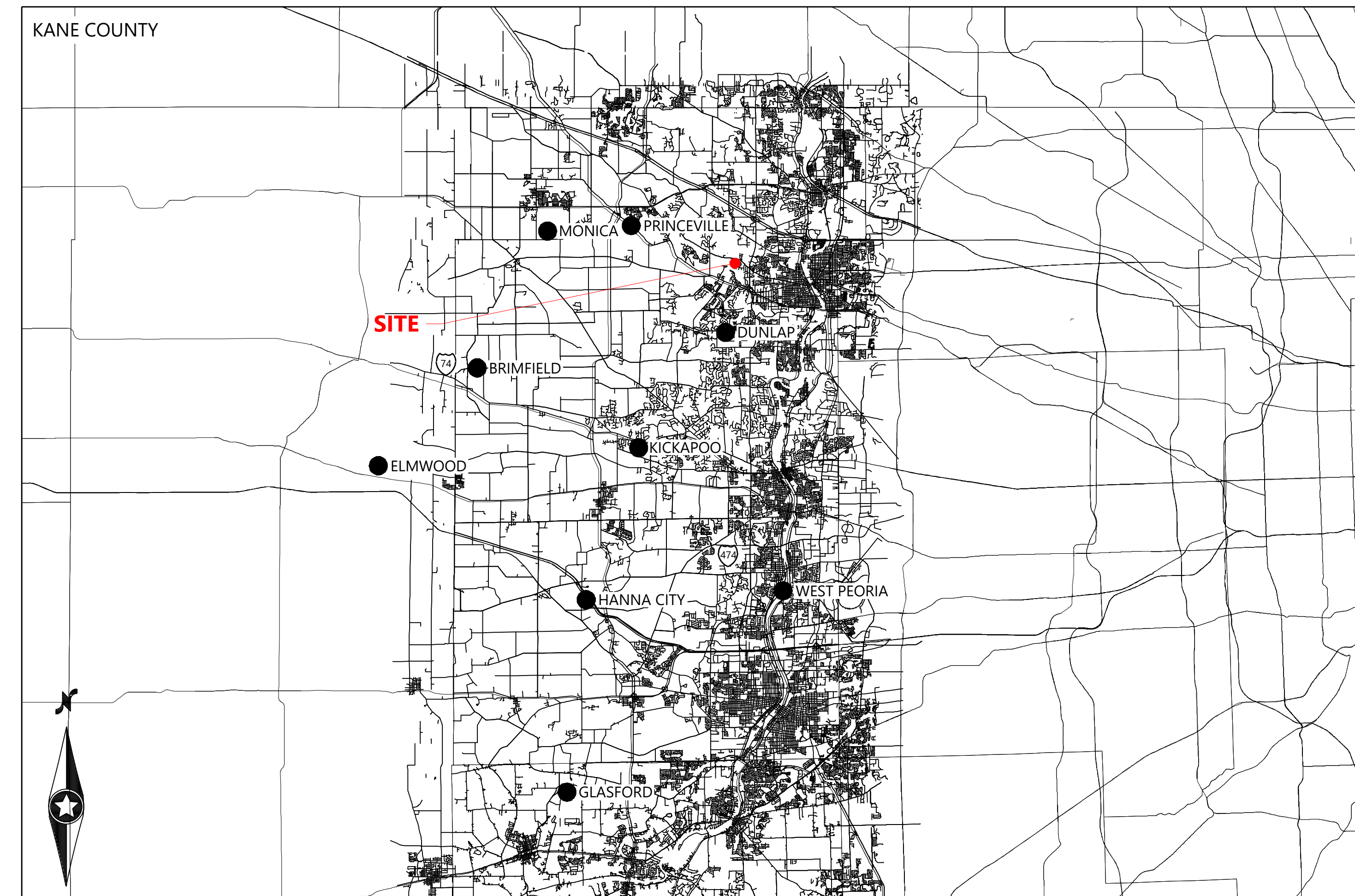
REGIONAL MAP

*NOT TO SCALE



VICINITY MAP

*NOT TO SCALE



**WILSON SCHOOL
SOLAR PROJECT**
Kane County, IL

CERTIFICATION

TO: SUNVEST SOLAR, LLC, AND CHICAGO TITLE INSURANCE COMPANY
THIS IS TO CERTIFY THAT THIS MAP OR PLAT AND THE SURVEY ON WHICH IT IS BASED WERE MADE IN ACCORDANCE WITH THE 2021 MINIMUM STANDARD DETAIL REQUIREMENTS FOR ALTA/NSPS LAND TITLE SURVEYS, JOINTLY ESTABLISHED AND ADOPTED BY ALTA AND NSPS, AND INCLUDES TABLE A OPTIONAL ITEMS 1, 2, 3, 4, 6(A), 6(B), 7(C), 8, 31(a), 13, 14, 15, 16, 17, 18, 19, AND 20. FIELD WORK COMPLETED ON 06/06/2025. THIS PROFESSIONAL SERVICE CONFORMS TO THE ILLINOIS MINIMUM STANDARD FOR AN ALTA AND TOPOGRAPHIC SURVEY.

DRAFT

GREGORY BRYAN BOWERS, LS DATE
ILLINOIS LICENSE NO. 035.004113 EXPIRATION 11/30/2026
GREG.BOWERS@WESTWOODPS.COM

COVER SHEET

ALTA/NSPS
LAND TITLE SURVEY

PROJECT NUMBER: 0069290.00

DATE: 07/09/2025

SHEET: 1 of 4

PREPARED FOR:



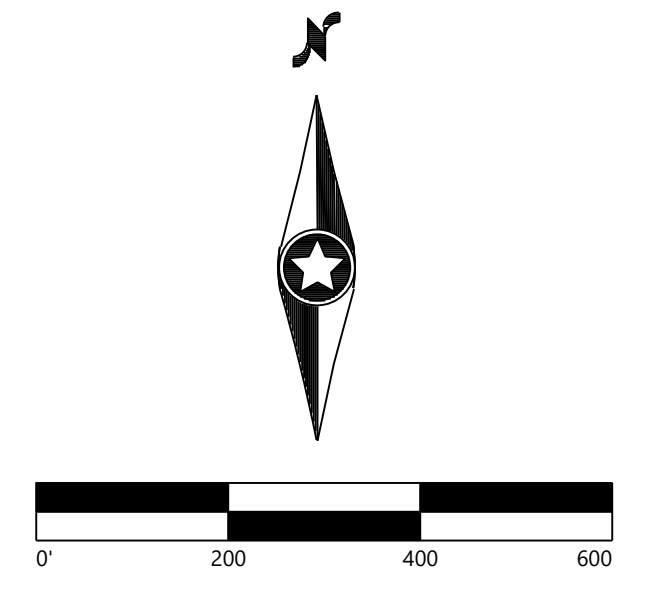
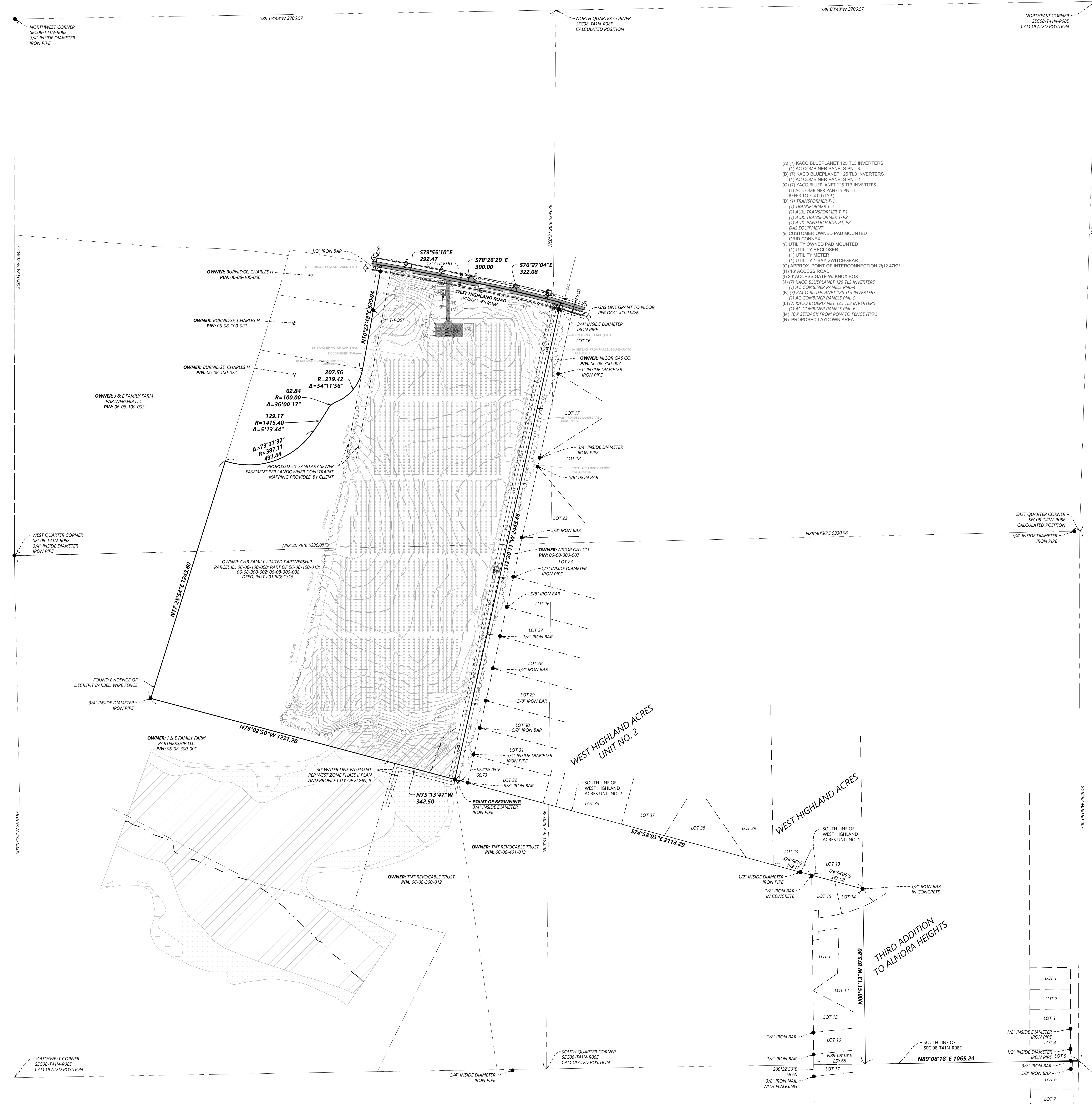
REVISIONS:

#	DATE	COMMENT

LEGEND:

	CULVERT
	GATE VALVE
	WATER MANHOLE
	ELECTRIC BOX
	POWER POLE
	FOUND MONUMENT (SEE LABEL)
	SIGN
	GAS LINE
	POWER OVERHEAD
	WATERMAIN
	TELEPHONE LINE
	CENTERLINE OF CREEK
	EXISTING FENCE LINE
	BOUNDARY LINE
	ADJOINER PROPERTY LINE
	RIGHT-OF-WAY LINE
	EASEMENT LINE
	SECTION LINE
	TREE LINE
	MAJOR CONTOUR LINE
	MINOR CONTOUR LINE
	BITUMINOUS SURFACE
	FEMA ZONE "X"
	FEMA FLOODWAY AREA IN ZONE "AE"
	DELINEATED WETLAND
	PROPOSED SOLAR PANELS
	PROPOSED FENCE LINE
	PROPOSED GRAVEL DRIVE
	PROPOSED POWER OVERHEAD
	PROFESSIONAL LAND SURVEYOR
	CORPORATION
	WITH
	ALUMINUM
	MEASURED
	RECORD
	POINT OF BEGINNING
	POINT OF COMMENCEMENT
	PARCEL ID

- (A) (7) KACO BLUEPLANET 125 TL3 INVERTERS
- (1) AC COMBINER PANELS PNL-3
- (B) (7) KACO BLUEPLANET 125 TL3 INVERTERS
- (1) AC COMBINER PANELS PNL-2
- (C) (7) KACO BLUEPLANET 125 TL3 INVERTERS
- (1) AC COMBINER PANELS PNL-1
- REFER TO E-4.00 (TYP.)
- (D) (1) TRANSFORMER T-1
- (1) TRANSFORMER T-2
- (1) AUX. TRANSFORMER T-P1
- (1) AUX. TRANSFORMER T-P2
- (1) AUX. PANELBOARDS P1, P2
- DAS EQUIPMENT
- (E) CUSTOMER OWNED PAD MOUNTED GRID CONNEX
- (F) UTILITY OWNED PAD MOUNTED
- (1) UTILITY RECLOSER
- (1) UTILITY METER
- (1) UTILITY 1-BAY SWITCHGEAR
- (G) APPROX. POINT OF INTERCONNECTION @ 12.47KV
- (H) 18' ACCESS ROAD
- (I) 20' ACCESS GATE W/ KNOX BOX
- (J) (7) KACO BLUEPLANET 125 TL3 INVERTERS
- (1) AC COMBINER PANELS PNL-4
- (K) (7) KACO BLUEPLANET 125 TL3 INVERTERS
- (1) AC COMBINER PANELS PNL-5
- (L) (7) KACO BLUEPLANET 125 TL3 INVERTERS
- (1) AC COMBINER PANELS PNL-6
- (M) 100' SETBACK FROM ROW TO FENCE (TYP.)
- (N) PROPOSED LAYDOWN AREA



WILSON SCHOOL SOLAR PROJECT
 Kane County, IL

DETAIL SHEET
 (CONTOUR)

ALTA/NSPS
 LAND TITLE SURVEY

PROJECT NUMBER: 0069290.00

DATE: 07/09/2025

SHEET: 4 of 4